

Model 410C01 Signal Conditioner - Firmware Update

Development Note:

The 410C01 signal conditioner module can benefit from occasional firmware updates which will be provided through the PCB.com website and can be easily applied via USB connection. PCB reserves the right to update this firmware at any time, but typically provides updates recommended for increased functionality and to address any network / security concerns. This update adds the manual zero functionality (available when in DC coupling mode), that was not available in the initial limited release. To address this issue PCB is adding the updated firmware on the 410C01 homepage, which is available to end users globally.

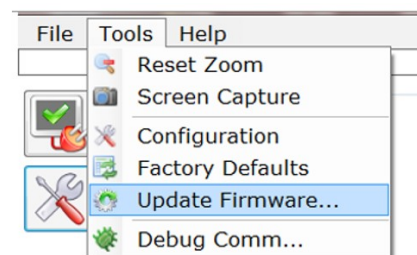
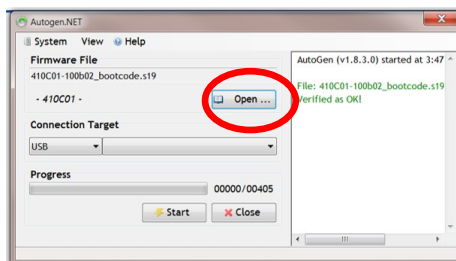
Downloading the Firmware Update:

- A. Go to the 410C01 main page <http://www.pcb.com/410c01>
- B. Select the Documents & Downloads Tab
- C. Under “Additional Downloads” select file name “410C01-100b02_bootcode.zip
- D. Open the zip file and save file 410C01-100b02_bootcode.s19 to convenient file location

Uploading the Firmware Update to the 410C01:

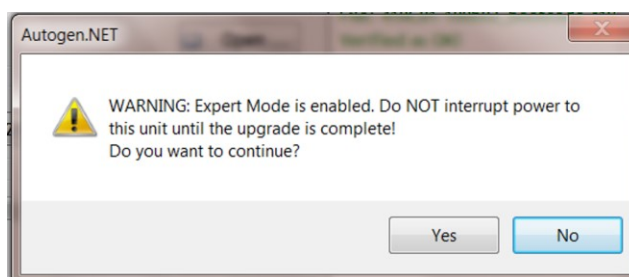
1. Connect the supplied BNC cable to the 410C01 and a host PC.
2. Apply 24 VDC power to the 410C01 module(s)
3. Load the PCB Signal Capture Software
4. Window loads, select available connection – USB
5. Click OK, red bar at the bottom of the page should turn green confirming a proper connection.
6. Select the tools menu tab in the left hand corner of the screen
7. Once in the tools Menu, select “Update Firmware”

8. Firmware update window loads
9. Select the ‘Open’ Button

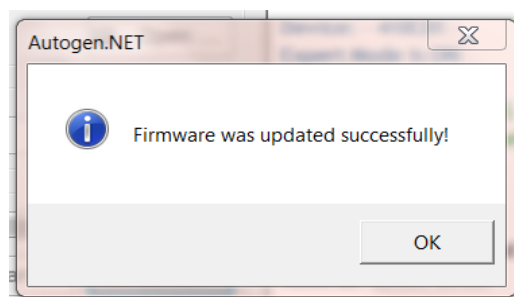
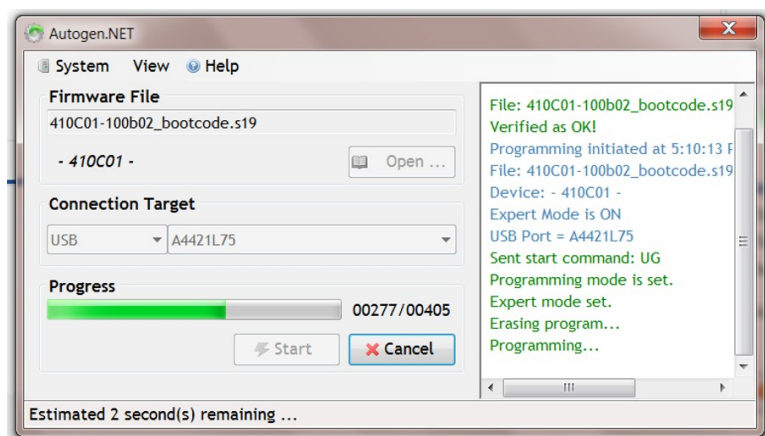


Model 410C01 Signal Conditioner - Firmware Update

10. System browser window opens, select file 410C01 – 100b02_bootcode.s19 that you saved in step 4 of the “Downloading the Firmware Update”
11. The firmware update window displays the firmware update file name indicates (verified as OK!)
12. Click Start button, firmware updates begins
13. Warning messages appears, do not interrupt power, select Yes to continue.



14. Firmware updates continues and completes in a few seconds.



15. Restart the SignalCapture Software to connect to additional units, otherwise update is complete.